

TAIPEI MICE

Undiscovered. Taipei Unique Festival Culture I

The Chinese New Year is approaching, time to get out and buy all your New Year goods, sweeping out the old to bring in the new. To help you buy new clothing for yourself and family to welcome in the New Year, this issue we take you on a discovery tour of all the best Taipei New goods-shopping spots, making your New Year holiday preparations more effective.



Dihua Street

Walk into Dadaocheng and you are immersed in a world of historic buildings, traditional folk customs, tea shops, fabric shops, and local specialty snack foods. The historical traces of the old city are found everywhere. Dihua Street is famed for its New Year goods, and remains Taiwan's largest wholesale and retail market for traditional regional specialty goods, Chinese medicines, and traditional fabrics. A witness to the historical development of Taiwan's international trade and commerce, it is also the most completely preserved old street in Taipei City. In the annual lead-up to the Chinese New Year the street is filled to bursting with a dazzling array of New Year goods, and there is a constant flow of buyers. If looking to experience the New Year festive ambience at its strongest, this is the place!



more



Dihua Street

Taipei Rear Station Commercial District

The Rear Station Commercial District encompasses Zhengzhou Rd., Chang'an W. Rd., Sec. 1 of Chongqing N. Rd., Taiyuan Rd., and other commercial arteries. In days gone by, because of its convenient location, it became a gathering place for wholesalers and enterprises with self-created brands. Today it has become a wholesale distribution center for creative materials, from decorative accessories, leather goods, toys, and gift items to packaging materials and even hardware. It can be called Taipei City's wholesale base for department store merchandise. You'll find everything your heart desires, with low prices and high quality. Dive in here for the most joyful of treasure hunts!

more



Taipei Rear Station Commercial District

Nanmen Temporary Market

Nanmen Market is the first choice for many Taipei residents for a wide range of prepared foods and food ingredients. It has a great many food selections not commonly found in other markets, notably authentic Chinese north-south flavors, including Cantonese, Sichuanese, and Zhejiang, Chinese sausages, etc. Each year during the Chinese New Year lead-in the market's delicious aromas from its fresh-prepared delicacies entice an endless stream of foodie explorers. You can satisfy all your conceivable gourmand needs in one spot; whatever your palate desires, satisfaction is guaranteed!

Currently, to accommodate reconstruction of its building as well as construction of the MRT Wanda Line, Nanmen Market has been temporarily relocated to No. 55, Sec. 2, Hangzhou S. Rd. ("Temporary" means "relay") to facilitate uninterrupted provision of services.

Add: No. 55, Sec. 2, Hangzhou S. Rd., Daan Dist., Taipei City 100
Tel: +886-2-2321-8069

Hours: Tues~Sun 07:00-19:00 (closed Mon)

more



Nanmen Temporary Market

- 01 Taiwan's CECC planning partnership to develop COVID antibody treatments
- 02 Group quarantine facilities will make an effort to ensure travelers who have a reservation but encounter a change of arrival time can still be accommodated in the facilities
- 03 In response to the continued severity of COVID-19 and the new coronavirus strain found in South Africa, travelers who have history of travel to South Africa or Eswatini in the past 14 days will be required to undergo quarantine at group quarantine facilities after arrival in Taiwan starting January 14
- 04 CECC will tighten quarantine measures for travelers coming to Taiwan starting from January 15 and make group quarantine facilities available to arriving travelers

Events



2021 Taipei Camellias Show / Jan.08-17

The Floriculture Experiment Center, overseen by the city's Parks and Street Lights Office, is an important original growth and preservation area for camellias in north Taiwan. It is located in the Shanzaihou area of Yangmingshan, where the slightly acidic soil and misty climate create the perfect conditions for camellia cultivation.

The camellias blossom each January, with the bloom extending into March. The Floriculture Experiment Center is immersed in fragrance, and the Taipei Camellias Show is staged at this time. Camellia experts from all around the country are invited to come showcase their most rare and precious camellia gems, in a grand, compellingly lovely combination display of flowers and trees. You're warmly welcomed to come take in this rich visual feast of camellias, forest, and bonsai treasures!

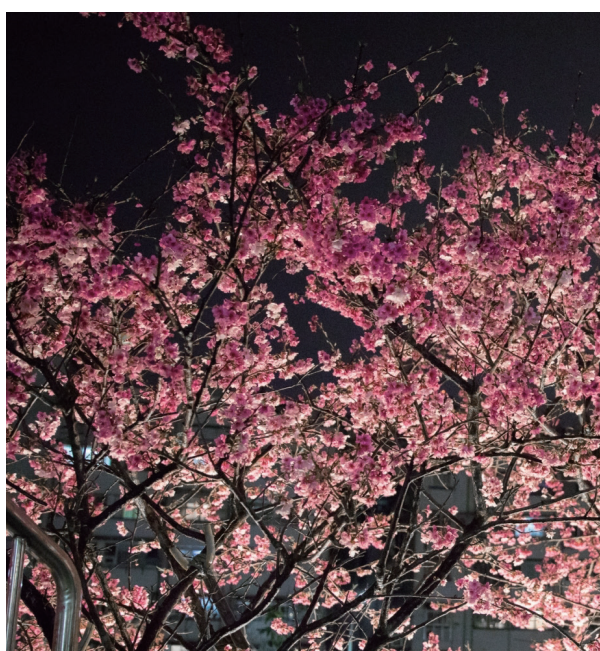


Taipei Camellias Show / photo by Parks and Street Lights Office, Public Works Department, Taipei City Government

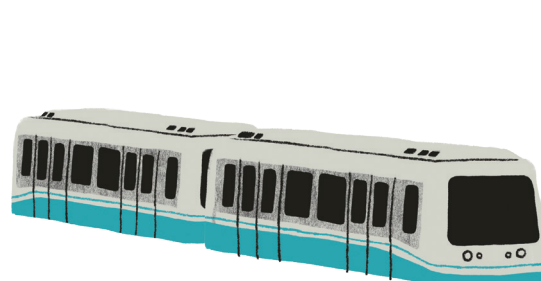
[more](#)

Lohas Cherry Blossom Festival / Jan.30 to Feb.28

Lohas Park in Taipei's Neihu District is one of the city's most easily accessible spots for cherry blossom viewing. Local public bus and metro services bring you right to the park's riverside cherry trees. The Taiwan Cherry trees beside the Neigou River take the blossom lead along the embankments each year, followed by the Yaezakura. The flower-viewing period extends into early March. Beautifying the park further is a 3km-long Cherry Blossom Walkway. This attraction is even more romantically stylish when lighting sets it aglow at night!



Lohas Cherry Blossom Festival / photo by Parks and Street Lights Office, Public Works Department, Taipei City Government


[more](#)

2021 Yangmingshan Flower Festival / Feb.05 to Mar.21

The Yangmingshan Flower Festival, renowned both at home and overseas, will hit the stage on Feb. 5, with its gorgeous floral beauties blooming in succession. In addition to the various types of cherry blossoms seen (Taiwan Cherry, Yaezakura, Showa Cherry, Yoshino Cherry), other stars such as camellia and azalea flowers also burst into resplendent bloom! A hearty welcome to one and all to come capture these lyrical images of arriving spring.

The Parks and Street Lights Office has specially invited the Chen Ya Lan Taiwanese Opera Troupe to portray celestial beings at the opening ceremony, presenting blessings in this time of global epidemic. During the Peace Memorial Day holiday there will be a Cherry Blossom Picnic & Love Flower Concert, and there will also be DIY handicraft dyeing experiences, eco-challenges, and other splendid fun-filled activities. Cooperating restaurants and other food and beverage businesses will also be offering attractive discounts. These many draws allow folks to enjoy fantasia-like seas of flowers without heading abroad.



Yangmingshan Flower Festival /photo by Parks and Street Lights Office, Public Works Department, Taipei City Government

[more](#)

Exclusive Experience



New Year's Eve Weilu

Each year on the eve of the 30th day of the lunar calendar 12th month (known as chuxi, or New Year's Eve), folks of Chinese descent follow the age-old "New Year's Eve dinner" custom, with all members of a family gathering together for a festive meal. The old-time custom was to place a small stove under the table (modern families will substitute with a hotpot placed atop the table). Coins will be placed all around the stove, symbolizing family reunion. The fire in the stove must be kept burning bright, symbolizing flourishing family prosperity. This is the origin of weilu ("surrounding the stove" = "family reunion dinner").

During the meal the ideal is to stretch the meal as long as possible, eating slowly. This symbolizes "long life" for everyone. Every dish placed on the table this day has auspicious meaning. The names for "hairy vegetable" and "making a fortune" are homonyms (facai). Round tangyuan, small glutinous-rice dumplings, symbolize completeness and reunion. Another dumpling called jiaozi, often translated as "Chinese dumpling," symbolizes traditional Chinese ingots because of the shape. Served this night with their full stems intact, commonly eaten spinach and mustard leaf become "long life vegetables." As well, the meal must have a fish dish, for "fish" and "surplus" are homonyms (yu), symbolizing the expression "surplus year after year" (nian nian you yu).



New Year's Eve Weilu /photo by Shangri-La's Far Eastern Plaza Hotel, Taipei

[more](#)

Bangka Longshan Temple

New Year's Day is the first day of the Chinese lunar calendar, and on this day most every household will travel to major temples to pray for safety, good luck, and fortune. This is called zouchun, or the "spring walk."

Bangka Longshan Temple was established in 1738. Legend says that during the Second World War was hit by Allied bombing, yet afterward the Guanyin Bodhisattva statue enshrined within sat safe and sound upon her lotus seat. This miracle has become a pillar of belief among devotees. Today the temple remains as busy and filled with incense aroma as ever, and has been listed as a national heritage site. It is one of the city's top three tourist attractions with visiting international travelers, along with the National Palace Museum and Chiang Kai-shek Memorial Hall. During the Spring Festival holidays, why not visit and pray for safety and good fortune for yourself and your loved ones!



Bangka Longshan Temple

