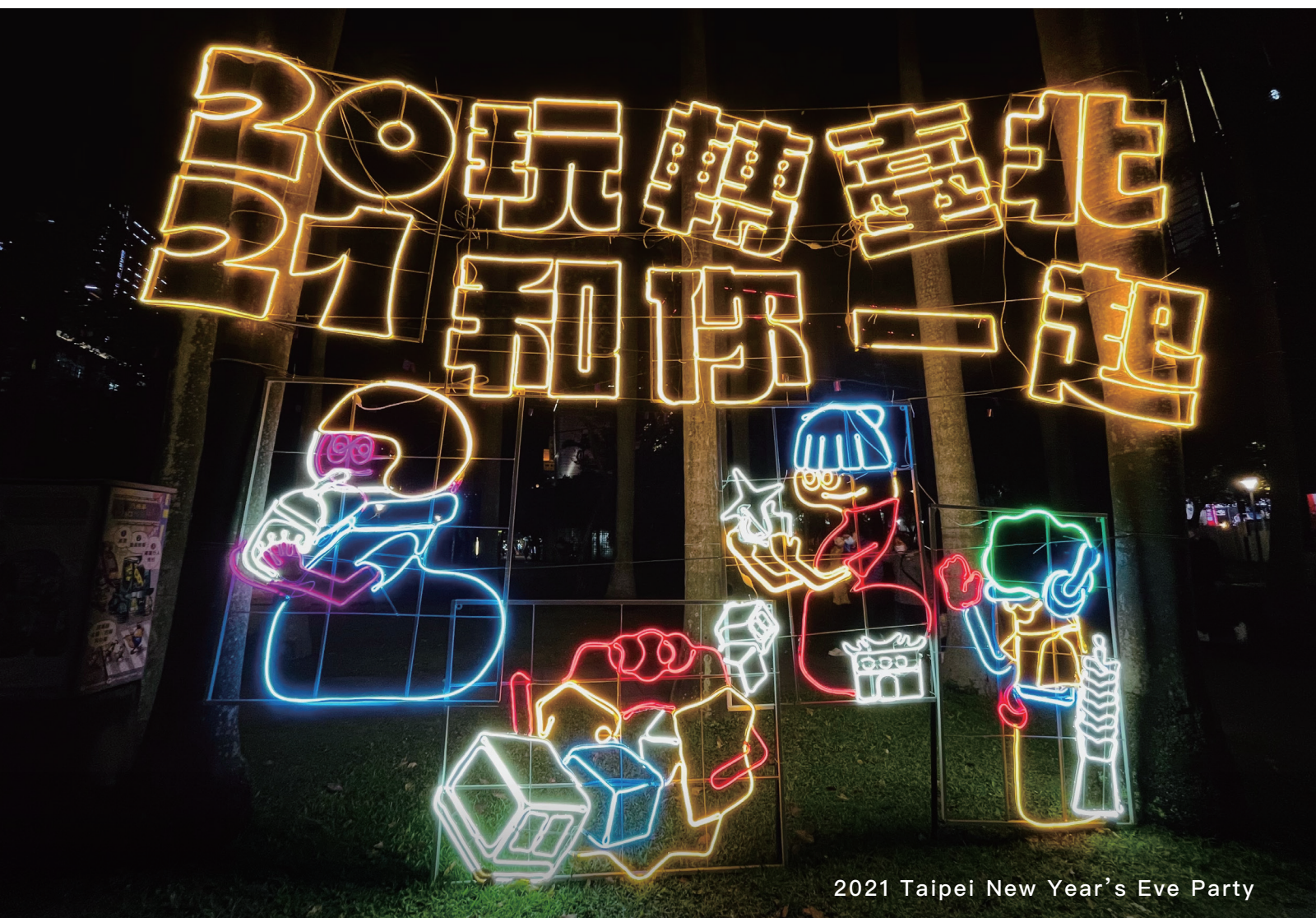


TAIPEI MICE

Undiscovered. 2021 Taipei New Year's Special

In 2020 the sudden Covid-19 pandemic hit the whole world hard. Thanks to the dedicated epidemic prevention efforts of the entire Taipei population, the wildly popular Taipei 101 New Year's Eve Fireworks Show and Taipei New Year's Eve Countdown Party will be staged as scheduled. These are ranked as two of the greatest New Year's Eve celebrations on the planet. In this issue we take you out to experience a special day in the life of Taipei, a city that never sleeps, hoping to say farewell to the lows brought by the pandemic and welcome in a bright and hope-filled 2021!



2021 Taipei New Year's Eve Party



18:00-24:00 Food Feasting –
Great Places to Gather with Friends and Family for the New Year Countdown

INPARADISE

Located on the 46th floor of Breeze Xin Yi, INPARADISE is currently the highest buffet restaurant in Taipei. It is divided into 8 dining areas, serves a wide variety of exquisite fresh-made dishes from different cuisines, and offers an unbeatable 360 degree panoramic view. Not only can you admire the Taipei 101 tower and Breeze Nan Shan building up close, you also get to take in the coruscating Taipei City nightscape. After facing a full year of turmoil, why not come out and reward yourself on this special day, inviting friends and family along for the fun!

Add: 46F, Breeze Xin Yi, No. 68, Sec. 5, Zhongxiao E. Rd., Xinyi Dist., Taipei City
Hours: 17:30-21:30 (dinner)
Reservations: +886-2-8780-9988



INPARADISE

[more](#)

Marco Polo – Neon New Year’s Eve Party

Sit in the lap of luxury on New Year’s Eve as you welcome in the new year! The Marco Polo restaurant in the Shangri-La Far Eastern Plaza Hotel Taipei enjoys an excellent location, with a superb unobstructed view of the Taipei 101 tower. This year a cool “neon” New Year’s Eve party has been rolled out, featuring specially prepared Italian dishes, unlimited drinks including a variety of red and white wines and cocktails, and a lively DJ show, leading everyone in a joyous countdown celebration and welcoming in the brand-new year 2021!

Add: 38F, No. 201, Sec. 2, Dunhua S. Rd., Daan Dist., Taipei City
Hours: 22:00-01:00
Reservations: +886-2-7711-2080

[more](#)

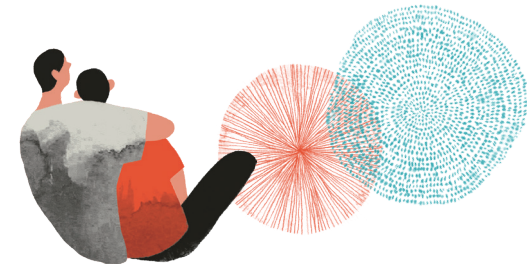


Marco Polo

24:00 An Unmissable New Year’s Eve Countdown

2021 Taipei New Year’s Eve Countdown Party

In the face of the continuing severity of the global pandemic, one city after another around the world has cancelled large-scale New Year celebrations. The city has been selected many times by CNN as “One of the 10 great places to spend New Year’s Eve,” and because Taiwan has done so well in controlling its internal situation, the Taipei 101 Fireworks Show will go on as scheduled. This year’s show will be comparable to last year’s magnificent 300-second spectacle. The New Year’s Eve Countdown Party, centered on Citizen Square, will have a super-powered lineup of stars taking the stage in relay in a 6-hour show. The city’s wish is that the music and fireworks joy will inspire people, inviting hope, everyone coming together to welcome in the brand-new year 2021!



[more](#)



Taipei New Year’s Eve Countdown Party



Young Song Shu 3

Young Song Shu 3

Young Song Shu is a massage-parlor chain offering foot and body massage health services. It has introduced the Kyoto Arashiyama footbath with Japanese Zen-style spatial design service to Taiwan's unique spa-bathing culture, combining this with Chinese health-enhancement footbath concepts. The water temperature used even ranges between 38°C and 43°C, and you can choose from a wide variety of footbath pouches with different curative effects. In addition, a wide range of massage services are provided according to personal needs to relieve your fatigue, and after your massage session, be sure to head to the dining area to try the cold guiling (“tortoise”) herbal jelly and popular piping-hot chicken soup!

Add: No. 70, Sec. 2, Xincheng N. Rd., Zhongshan Dist., Taipei City
Hours: 24H
Reservations: +886-2-2571-7333

[more](#)

Eslite Xinyi Store

In May this year the eslite Xinyi Store took the baton from the eslite Dunnan Store for operation of eslite's flagship 24H bookstore. It is home to more than 170,000 book selections, Taiwan's only 24H music shop, and Taiwan's largest vinyl record section. The in-house fresh food market, called the eslite flavor Marché, provides traceable good-agriculture healthy food ingredients. Items include fresh fruits, veggies, meats, seafood, free-range eggs, small-farm milk, sauces, snacks, and much else. And don't forget the eslite Café, which offers late-night coffees, food options, and mixed drinks!

Add: No. 11, Songgao Rd., Xinyi Dist., Taipei City
Hours: 24H
Tel: +886-2-8789-3388



[more](#)



Eslite Xinyi Store

YaoYue Teahouse

YaoYue (Moon Inviting) Teahouse is located in the Maokong area in the city's high Muzha hills. Maokong is renowned for the production of Tieguanyin and Wenshan Baozhong tea, its mountainsides filled up with tea plantations and farm fields, in a vast canvas of lush greenery. Here is a place where you can linger over fine tea while getting close to nature and cleansing the soul. If the hustle and bustle of the big city has left you feeling tired, heading up into the mountains to YaoYue Teahouse is just the remedy!

Add: No. 6, Ln. 40, Sec. 3, Zhinan Rd., Wenshan Dist., Taipei City
Hour: 24H
Tel: +886-2-2939-2025

[more](#)



YaoYue Teahouse



Fu Hang Soy Milk

Michelin Bib Gourmand Recommendation – Fu Hang Soy Milk

Breakfast is a person's source of vitality for the coming day. Fu Hang Soy Milk, found on the second floor of the venerable Huashan Market, has been operating more than 60 years. It has been a Michelin Bib Gourmand recommendation each year since 2018. It can be called one of Taipei's must-try breakfast joints, and from the moment of opening each day welcomes a never-ending stream of customers. Must-order menu items are the soy milk, salty soy milk, thick shaobing (roasted flatbread), youtiao (deep-fried cruller) wrapped in flatbread, caramel sweet crepe, and egg crepe. If you'd like to try the many delicious Fu Hang Soy Milk tastes, it's recommended you come line up early, to avoid a long wait!

Add: 2F, No. 108, Sec. 1, Zhongxiao E. Rd., Zhongzheng Dist., Taipei City
Hours: 05:30-12:30
Tel: +886-2-2392-2175

more

Xiangshan Hiking Trail

Xiangshan, or Elephant Mountain, located in the city's Xinyi District, is so named because it is said to have the shape of an elephant's head. Though its peak has an elevation of just 183m, the view from the summit is thrilling, with Taipei 101 directly in front and the Taipei Basin laid out beyond. The relaxing trail up and lovely scenery have made this a popular check-in spot. Before the sun rises, in the glow as it sets, and after dark, the lights of the city are on and you are regaled with a Taipei of different colors.



more



Xiangshan Hiking Trail

Qingtian 76

This old Japanese-style residence, located along Qingtian Street at No. 6, Lane 7, was built around 80 years ago during the 1895-1945 Japanese colonial period. In 2006 it was formally designated as a municipal heritage site. It is now open for public visit, with free guided tours and lecture series organized, and with food and beverage services offered. If you have some free time, why not take a trip through time, savoring the old stories and tranquil air conjured by this vintage house!

Add: No. 6, Ln. 7, Qingtian St., Daan Dist., Taipei City
Tel: +886-2-2391-6676

more



Qingtian 76